



Finish



Soon



Now



Dangerous



Lost



Emergency



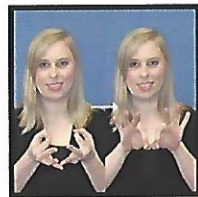
Please



Thank You



Trust



Important



Accident



Fire



Good



Bad



Don't



A



B



C



D



E



F



G



H



I



J



K



L



M



N



O



P



Q



R



S



T



U



V



W



X



Y



Z

COMMUNITY CENTER
FOR THE DEAF AND
HARD-OF-HEARING
A CATALYST COMPANY

Crisis Helpline • (419) 522-HELP • (419) 522-4357

www.catalystlifeservices.org

To schedule a Sign Language Interpreter:

Call (419) 756-1133

After-Hours Number:

(419) 522-4357

EMERGENCY SERVICES

- Sign Language -

ESSENTIAL GUIDE



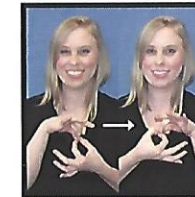
Can



I



Help



Interpreter



Call



Stay



Calm

CATALYST

— LIFE SERVICES —



Name



Number



Address



Who



What



Where



Why



When



How



Yes



No



Don't Know



Police



Firefighter



Ambulance



Go



Come



Follow



Wait



Move



Stop



Lie Down



Sit



Stand



Doctor



Nurse



Family



Hospital



Home



Car



Body



Head



Heart



Sick



Hurt



Heart Attack



Dizzy



Stroke



Forget



Nauseous



Blood



Breathe



Medicine



Broken



Bone